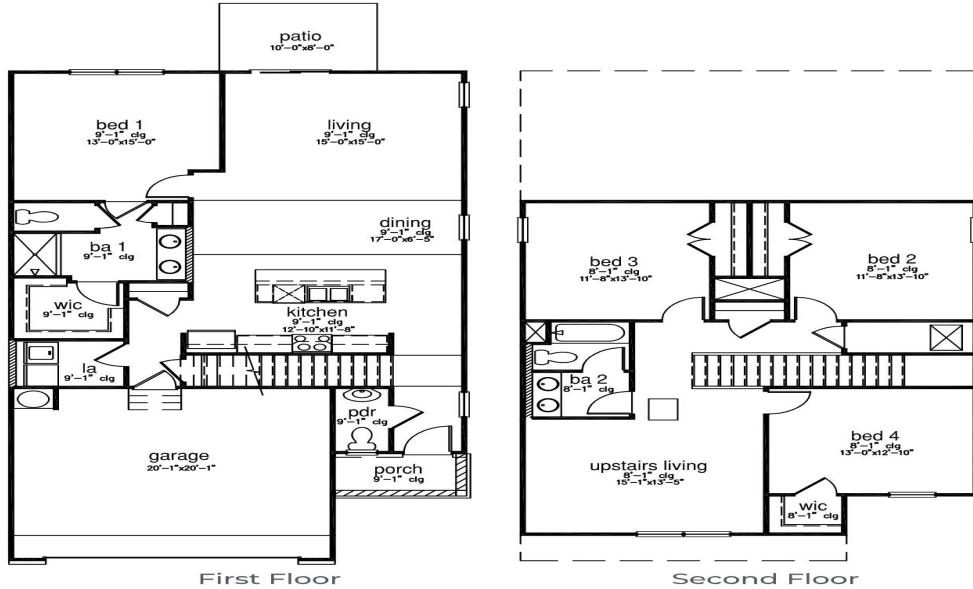




3032 Dalmore Drive, Ravenel, 29470, SC

https://searchrealestate.co/properties/3032-dalmore-drive/ravenel/sc/29470/MLS_ID_24013734



Price - \$386,900

Bedrooms	Baths	Half Baths	SqFt	Lot Size	Year Built	DOM
4	2	1	2203	0.1500	2024	313 Days

Features

Exterior

- Stoop

Cooling

- Central Air

Heating

- Electric

Community Features

- Clubhouse
- Pool
- Trash

Floors

- Vinyl

Interior Features

- Ceiling - Smooth
- Kitchen Island
- Walk-In Closet(s)

- Bonus
- Eat-in Kitchen
- Family
- Entrance Foyer
- Living/Dining Combo
- Pantry

Utilities

- Berkeley Elect Co-Op
- Charleston Water Service

Window Features

- Window Treatments

Lot Features

- 0 - .5 Acre
- Level

Style

- Traditional

Other

- Fiberglass
- Walk-In Closet(s)

Description

READY THIS FALL! This homesite is back-to-back with an adjacent home. Hillcrest is tucked away in a quiet, true Lowcountry environment, tucked away from the hustle and bustle of the city. Conveniently located off Highway 17, this community gives direct access to everything that makes Charleston such a great place to live! Here you are, just 15 minutes to John's Island, 20 minutes to West Ashley, close to the airport and just minutes from the incredible beach town of Edisto! On days when you're not at the beach, enjoy Hillcrest's beautiful amenities like its resort style pool and open-air clubhouse! The MANNING floorplan features a large open living and dining space and a first floor owner's suite with a double bowl vanity and a spacious walk-in closet. The second floor includes three secondary bedrooms, loft, and a versatile upstairs living space. Photos are a depiction of a similar home. All new homes will include D.R. Horton's Home is Connected® package, an industry leading suite of smart home products that keeps homeowners connected with the people and place they value the most. This technology allows homeowners to monitor and control their home from the couch or across the globe. Products include touchscreen interface, video doorbell, front door light, z-wave t-stat, keyless door lock all controlled by included Alexa Dot and smartphone app with voice! *Square footage dimensions are approximate. *The photos you see here are for illustration purposes only, interior and exterior features, options, colors and selections will differ. Please reach out to sales agent for options.

SEE THIS PROPERTY



James Schiller

Realtor, Brand Name Real Estate

Phone: 18434788061

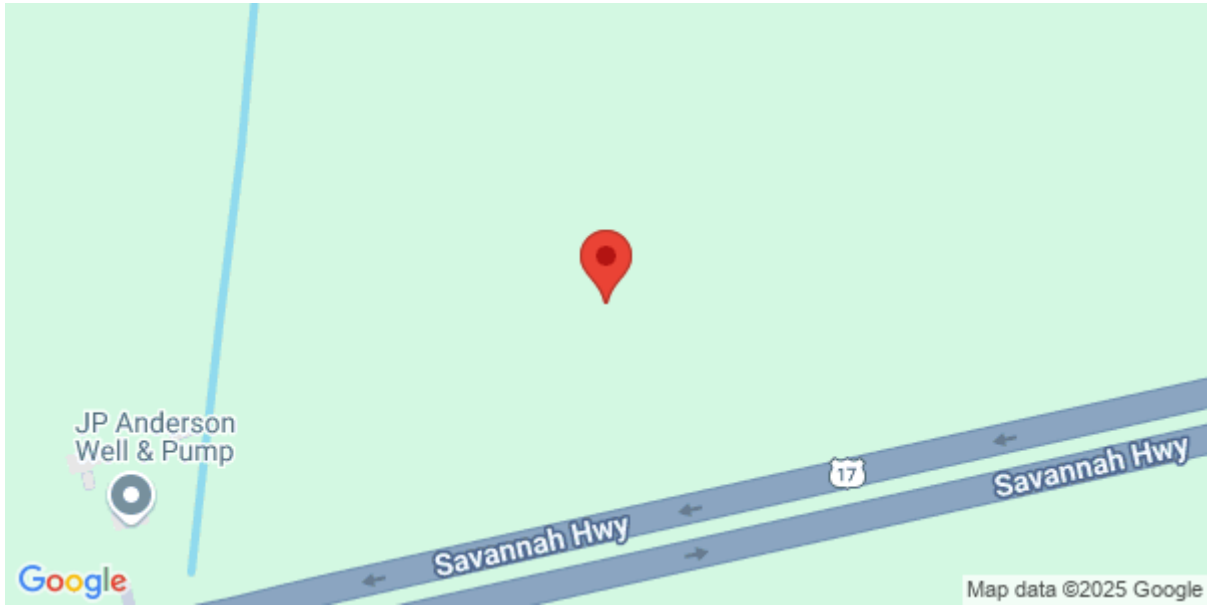
Email: jameseschiller@gmail.com

Check On Site



https://searchrealestate.co/properties/3032-dalmore-drive/ravenel/sc/29470/MLS_ID_24013734

Location



3032 Dalmore Drive, Ravenel, 29470, SC