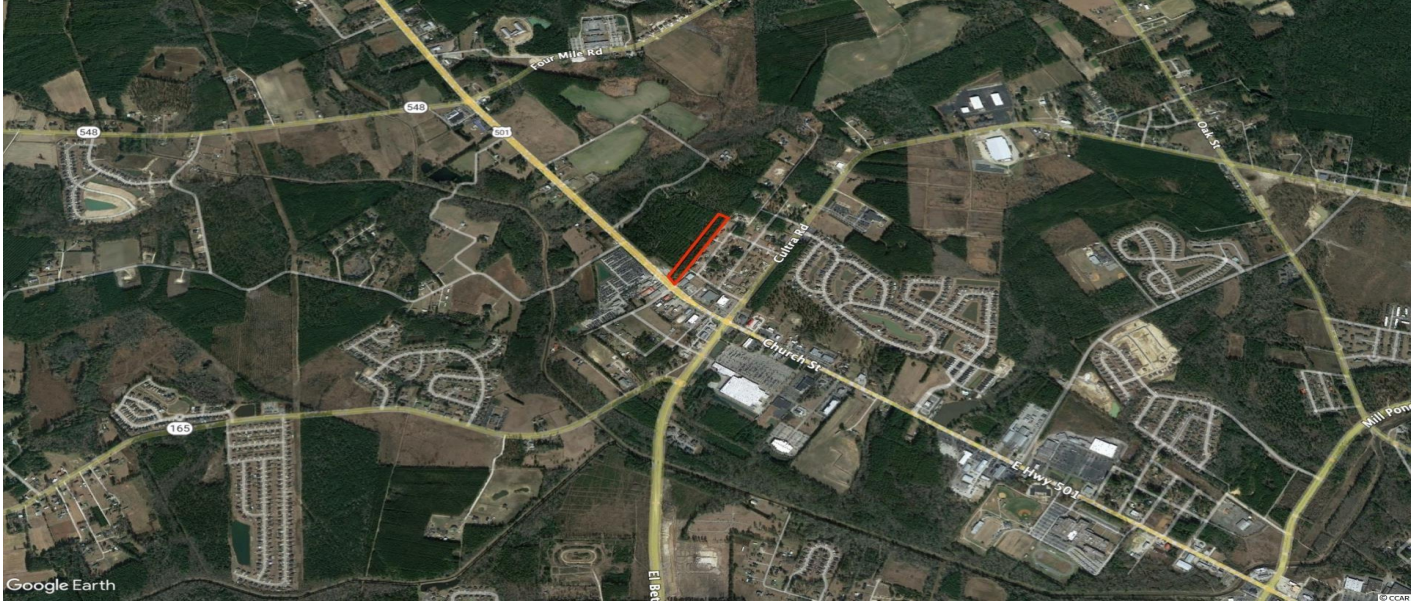




2964 Highway 501 W, Conway, 29526, SC

https://searchrealestate.co/properties/2964-highway-501-w/conway/sc/29526/MLS_ID_2211197



Price - \$749,900

Lot Size DOM

3.6300 1191 Days

Features

Utilities

- Electricity Available
- Sewer Available
- Water Available

Lot Features

- Irregular Lot
- Outside City Limits

Description

OFFERED FOR SALE: Approximately 3.57 Acres with Approximately +/- 106' of frontage on US Highway 501 in Conway, SC. This location is ideal for a future commercial development. Easily accessible via US-501, US-701 and US-378. Approximately 3.57 Acres. Located Outside the City Limits of Conway, SC. Approximately +/- 106' Frontage on US-501. Approximately +/- 1,470' Depth. Tract A Identified as TMS#1220003010 and PIN# 33703010014, County of Horry, SC. Tract B Identified as TMS# 1220003062 and PIN# 32614040009, County of Horry, SC. Average Daily Traffic Count: 20,000 (Source: SCDOT 2019). Approx. 1,398SF Residential Building on Tract A. Underground Utilities. Curb Cut on Highway 501 Provides Access for Westbound Traffic. Additional Ingress/Egress from Mercedes Drive.

SEE THIS PROPERTY



James Schiller

Realtor, Brand Name Real Estate

Phone: 18434788061

Email: jameseschiller@gmail.com

Check On Site



https://searchrealestate.co/properties/2964-highway-501-w/conway/sc/29526/MLS_ID_2211197

Location



2964 Highway 501 W, Conway, 29526, SC